



CAREGIVERS IN AMERICA

**Growing Contributions
with Little Support**

WHO ARE THEY: Prevalence

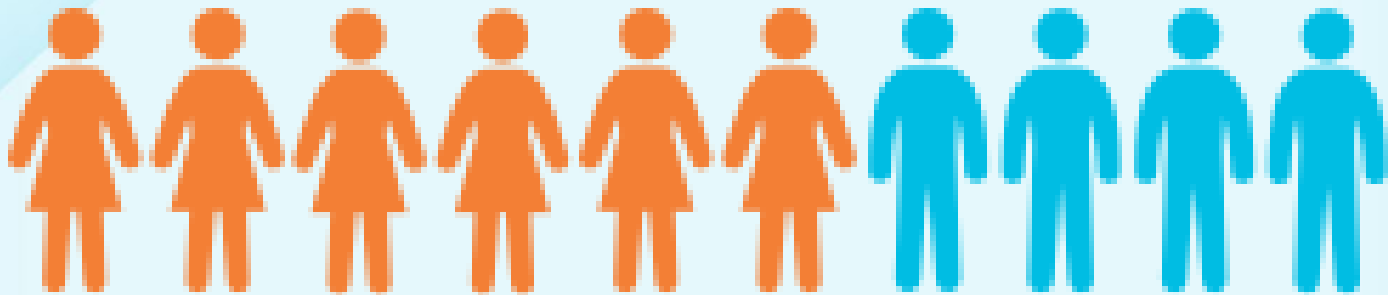


WHO ARE THEY: Compensation



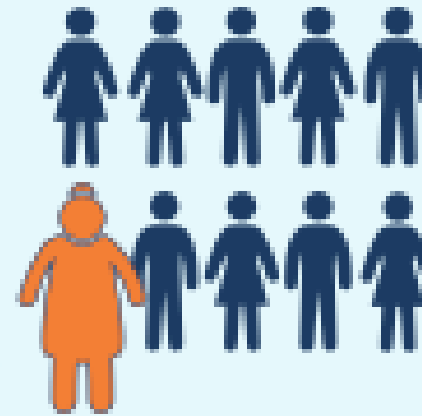
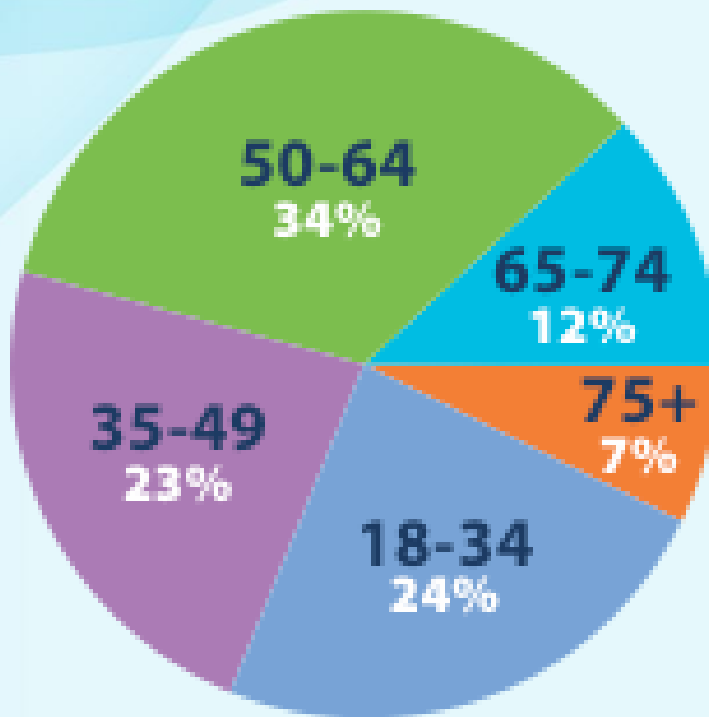
90% of all caregivers
who provide long-term services
and supports are **UNPAID**

WHO ARE THEY: Gender



60% FEMALE 40% MALE

WHO ARE THEY: Age

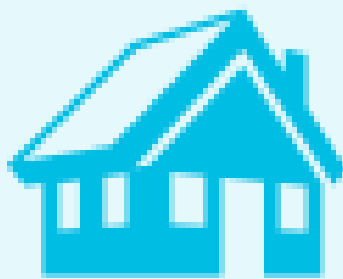


**1 in 10
Caregivers
are 75 or
Older**

WHERE CARE RECIPIENTS LIVE



48%
his/her home



35%
**caregiver
home**



11%
**nursing facility,
assisted living,
retirement community**



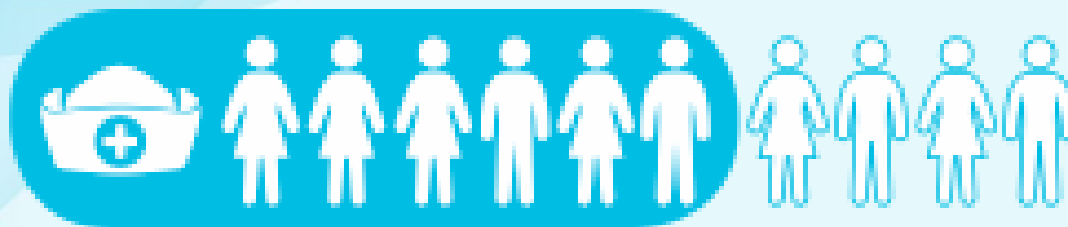
6%
**someone
else's
home**

HOURS OF CAREGIVING



24.4
HOURS
AVERAGE
PER WEEK

CAREGIVER TASKS

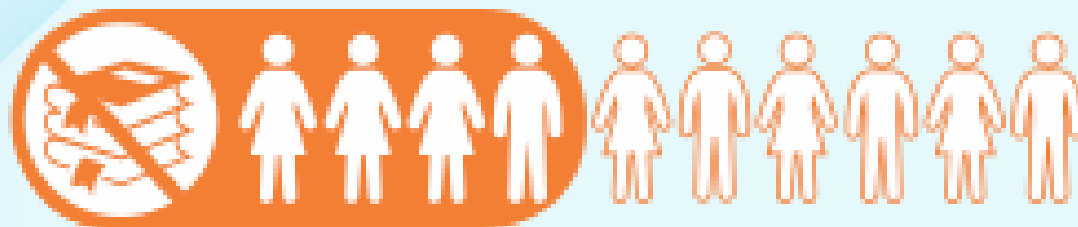


57% assist with medical/nursing tasks



78% who provide medical/nursing tasks are managing medications, and administering IVs, injections, and medications

CAREGIVER TASKS



42% perform medical/nursing tasks
without any training

CAREGIVER STRESSORS

Emotional



**55% FEEL
OVERWHELMED**

CAREGIVER STRESSORS

Health



**REPORT PHYSICAL STRAIN
DUE TO CAREGIVING DUTIES**

CAREGIVER STRESSORS

Financial



**FAMILY CAREGIVERS ARE
2.5 TIMES MORE LIKELY
TO LIVE IN POVERTY**

CAREGIVER STRESSORS

Financial

1 IN 5  
**RETIREES LEFT WORKFORCE
EARLY TO CARE FOR FAMILY**

CAREGIVER STRESSORS

Financial

\$303,880

**LOST INCOME and BENEFITS
ON AVERAGE OVER LIFETIME
FOR FAMILY CAREGIVERS 50+**



SERVICES FOR CAREGIVERS

The National Family Caregiver Support Program: Caregivers Served in 2013

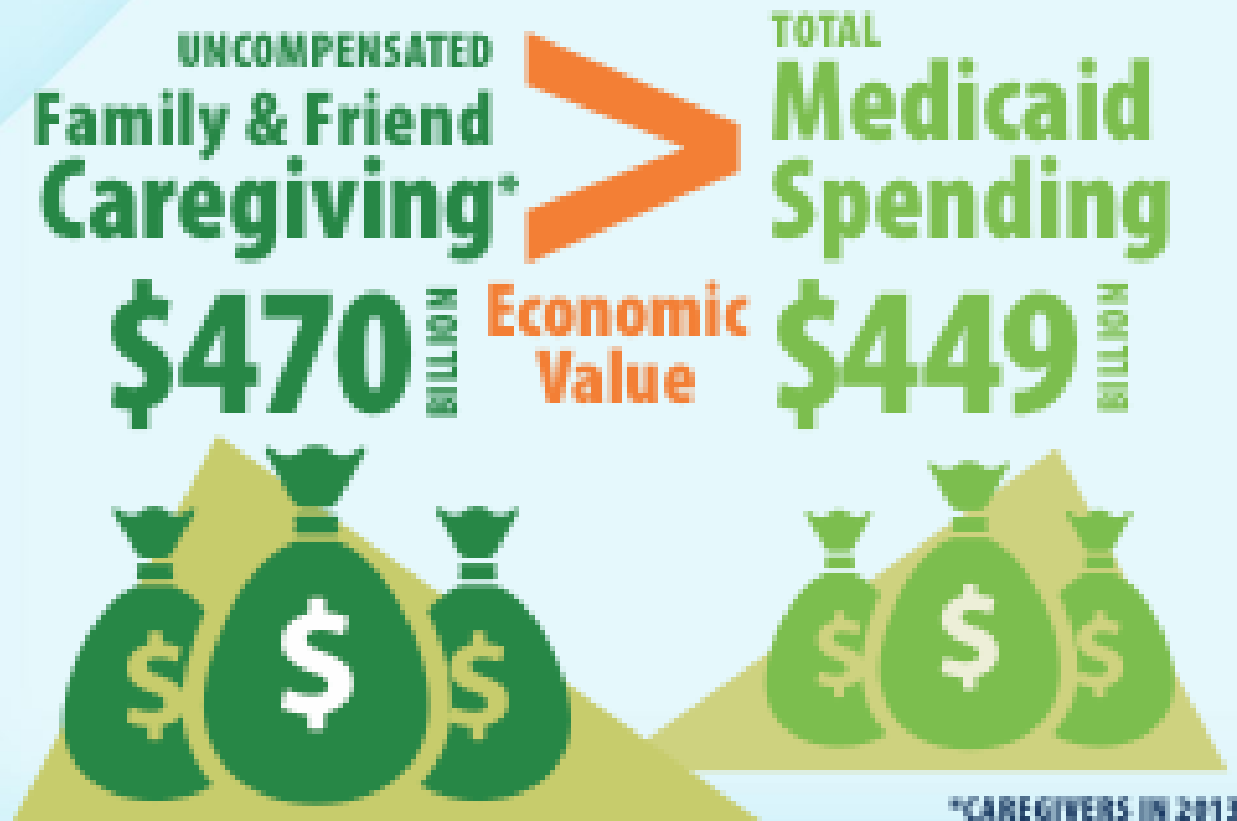


SERVICES UNABLE TO MEET DEMAND

8 OUT OF **10** COULD USE MORE INFORMATION AND SUPPORT



THE GROWING VALUE OF CAREGIVING



PROFILE OF CAREGIVERS IN AMERICA

- 82% care for 1 adult
- 15% care for 2 adults
- 3% care for 3+ adults

On average, caregivers help with 4.2 Instrumental Activities of Daily Living

- Caregivers by Race:
- 16.9% White
 - 19.7% Asian American
 - 20.3% African American
 - 21% Hispanic

\$28+ billion in lost productivity for full/part-time employed caregivers

49% felt they had no choice in taking on this role

85% provide care to a relative

28% of caregivers have a child or grandchild living with them

8.4 million provide care to an adult with an emotional or mental health issue

17.9 billion hours of unpaid care for people with Alzheimer's & related dementias

600,000-700,000 families have an adult with I/DD living with aging family members with no future planning





For more information, please visit: www.nasuad.org

Or call us at: **202-898-2578**