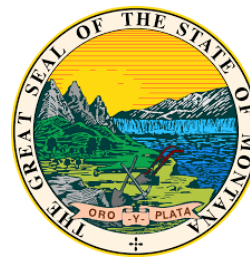


# Montana Senior & Long Term Care Division



## State Agency Mission

To advocate and promote dignity and independence for older Montanans and Montanans with disabilities by: Providing information, education, and assistance; Planning, developing and providing for quality long-term care services; and Operating within a cost-effective service delivery system.

## Populations Served

- Older Adults**
- Adults with Physical Disabilities**
- Adults with Developmental Disabilities
- Individuals with Traumatic and/or Acquired Brain Injuries**
- Individuals with Behavioral Health Conditions
- Individuals with Substance Use Disorders
- Other:** Veterans

## Organizational Structure

The division director is a career, non-appointed employee who oversees a staff of 216 FTE.

## Local Network

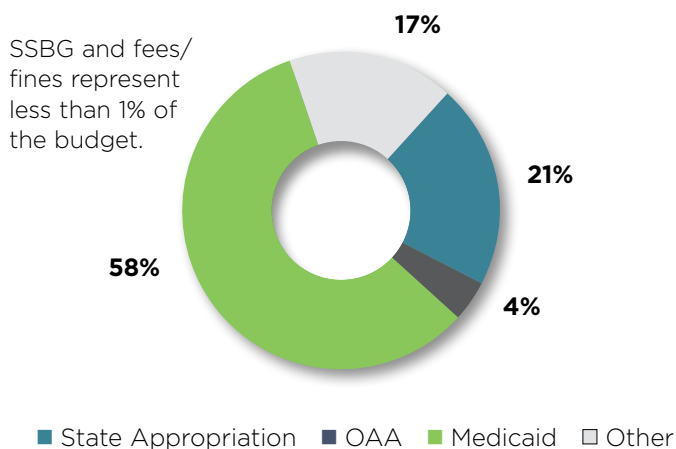
- 10** Area Agencies on Aging
- 8** Tribal Organizations

## Top Five Agency Policy Priorities

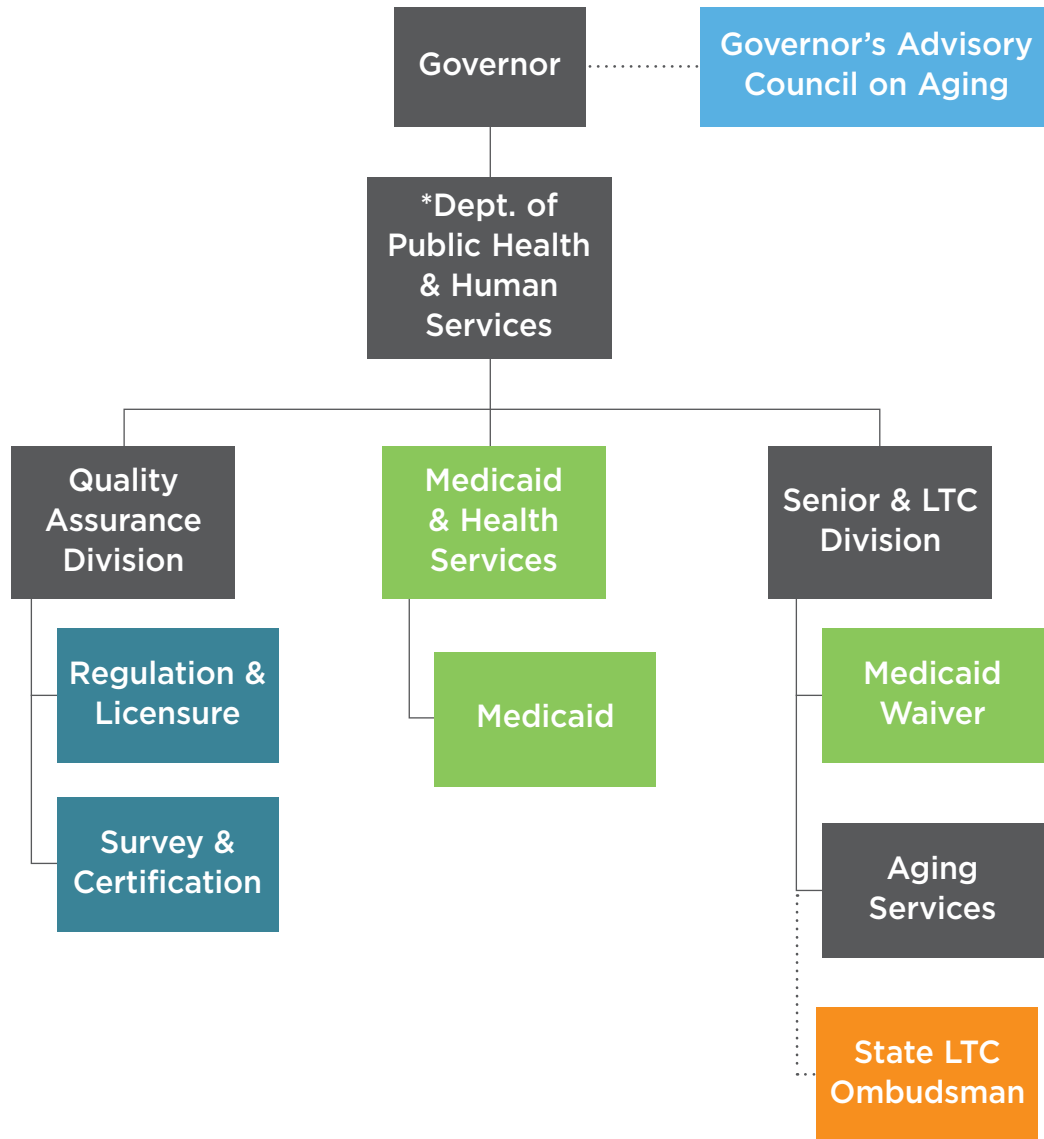
1. Delivering Services Remotely during COVID
2. Quality Improvement
3. Alzheimer's and Related Dementias
4. Supporting Caregivers
5. Mitigating Social Isolation

## Agency Funding Sources

Total FY2020 Budget \$349,369,255



## Montana Senior & Long Term Care Division



- |                                                                                                                                                                                                                                                        |                                                                                                                                                                                                       |
|--------------------------------------------------------------------------------------------------------------------------------------------------------------------------------------------------------------------------------------------------------|-------------------------------------------------------------------------------------------------------------------------------------------------------------------------------------------------------|
| <ul style="list-style-type: none"> <li>■ Aging or Physical Disability Services and Agency or Division with Multiple Functions</li> <li>■ Medicaid Services</li> <li>■ Long-term Care Ombudsman</li> <li>■ Provider Regulation and Oversight</li> </ul> | <ul style="list-style-type: none"> <li>■ Advisory Board</li> <li>..... Denotes an advisory board or a contractual/indirect reporting relationship.</li> <li>* Denotes Cabinet-level Agency</li> </ul> |
|--------------------------------------------------------------------------------------------------------------------------------------------------------------------------------------------------------------------------------------------------------|-------------------------------------------------------------------------------------------------------------------------------------------------------------------------------------------------------|

## Responsibilities of Montana’s Senior & Long Term Care Division

Aging & Adult Services	
Set statewide aging policy	✓
Set statewide disability policy	
Administer Older Americans Act (all programs except SCSEP)	✓
Administer Senior Community Service Employment Program	
Administer a state-funded aging & disability program	
Manage state Aging & Disability Resource Center network	✓
Administer the State Health Insurance Assistance Program	✓
Provide Adult Protective Services (18+)	✓
Provide Elder Protective Services <i>only</i> (60-65+)	
Operate state-owned institutional facilities	✓
Oversee guardianship program	
Serve as state guardian	✓
Oversee Centers for Independent Living	
Administer State Vocational Rehabilitation Program	
Administer State Assistive Technology Program	
Manage No Wrong Door system	

Medicaid Services	
Administer Medicaid State Plan Services	✓
Administer Medicaid HCBS waiver(s)	✓
Administer PACE program	
Perform Medicaid functional eligibility determinations	✓
Perform Medicaid financial eligibility determinations	
Provide case management services to Medicaid recipients	
Administer PASRR	✓
Regulate and administer managed long-term services and supports	
Provide quality assurance for managed long-term services and supports	
Provide quality assurance for Medicaid HCBS	✓

Responsibilities for Provider Management	
Regulate institutional providers	
License institutional providers	
Regulate HCBS providers	
License HCBS providers	
Certify Assisted Living providers	

## Key State Initiative

### *New year, new focus, new energy.*

All programs within Senior and Long Term Care can support the concept of community-based living for the elderly and people with disabilities. Research, case studies and good common-sense supports that individuals are healthier when they are stable in their own home, an environment of their choosing. A second benefit is the ability to lower costs of services and extend the ability to provide services to more individuals. There will be three phases: planning, implementation and review. The management team will discuss opportunities, challenges and logistics. Subsequently each bureau chief will select a project that will keep the issue of community-based living in the forefront of daily work, including how the project will interface with other bureaus. Each bureau needs a team with a steward of the project to track data, collect narratives of success/lessons and suggest policy changes. These policy changes must reach across programs, but not be directed at a program, in other words—it must be cooperative. Provider groups, field staff and support staff need to be involved. Each project should: promote the value community-based living; collect data regarding needed changes to support to maintain or gain community living; engage internal and external stakeholders; and mesh easily into current work.

